

# MERG West Midlands Area Group (WMAG)

[MERG Home page](#)[Area Groups](#)[More on our  
Knowledgebase](#)[Group Members Page](#)

## How do I contact the Area Group





Please indicate West Midlands Area Group in your message [Contact MERG](#)

## Who is the leader of the group?



Allan Gardner M6237 - *Group Leader*

## Would you like to join today?

Not a member? then

[Join MERG Here](#)



and sign up to this Area Group. If you are already a member

[Join the West Midlands Area Group](#)

Select **West Midlands Area Group** from the drop-down list in **Other Area Groups** and press the **Subscribe to Area Group** button.

## Where do you meet?

We meet at the [Birmingham Canal Navigations Society's](#) historic premises at  
Titford Pump House  
Engine Street  
OLDBURY  
West Midlands  
B69 4NL.



[Google maps link to Titford Pumphouse](#)

There is plenty of car parking – mostly on Engine Street, some within the Pump House compound.

All facilities are at ground level.

## How often do you meet?



We meet four times a year in January, April July and October. Usually the January and July meetings are on the second Saturday of the month, with the April and October meetings on the second Sunday.

## What does the group get up to?

Our day's meeting starts at 10:00 am and concludes at 16:00. **See below for details of our next meeting.**

The day is split into two parts.

The morning session is more formal in so far as we have one or more guest speakers.

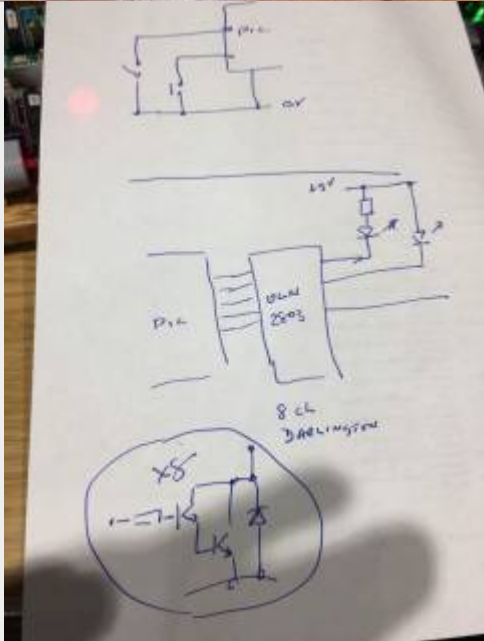
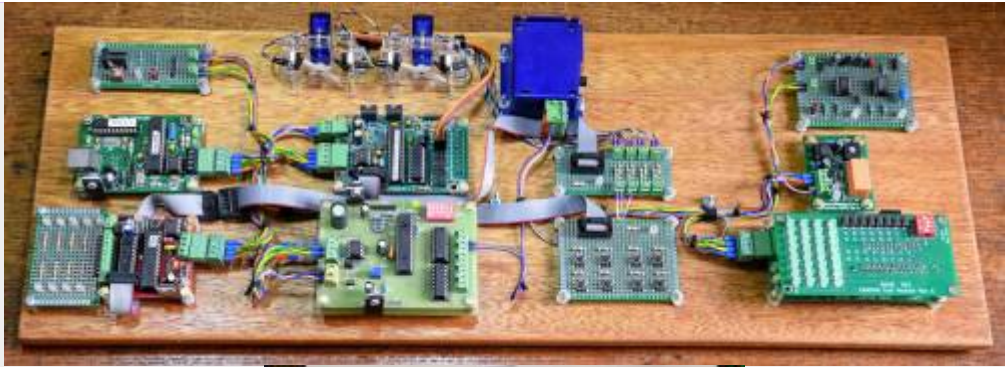
The topics are far-ranging. [Click here to view examples of previous meetings](#)

The afternoon session is informal and generally consists of:

1. Members working on their current project (normally a Kit).  
We will do our best to help with construction and problem-solving.
2. Talking to presenters about the days topic.
3. Bring along something you are working on, even if its work in progress and share it with others
4. Passing the day talking about all thing model railway electronics.

We charge £5 for the day which goes to the BCN Society for the use of the pump house.

We do not charge for tea, coffee or the superb cakes that are kindly supplied by one of our members' wives.



## What have we have been up to previously?

[Click here to view details of previous meetings](#)



## Our Next Meeting including exhibitions where MERG are in attendance?

Date	Event	Description	Location	Link
10:00 19-Oct	West Midlands area group autumn meeting.		BCNS, Titford Pump House, Engine Street, Oldbury, West Midlands	

## Programme for our next Meeting

Time	Description.	Who
	<b>The date of this meeting changed (see above) to deconflict with the <a href="#">Warley Show</a> at <a href="#">Statfold Country Park</a> on the weekend 12-13 October</b>	
10:00	Coffee & Registration	All
10:05	Welcome	AG
10:15	Talk 1 Procket Money Projects	CM
11:15	Coffee, Tea, & Cake Break	All
11:30	Talk 2 Baby Steps with PIC	AC
12:30	Any questions	
13:00	Lunch	All
13:30	Practical session - Have a go with surface mount - build a surface mount track tester	All
	Components provided, please bring your own soldering iron - though we will have some irons available.	
14:30	Tea, Coffee & Cake Break	All
14:45	Practical session 2 Any questions	All
15:45	Wash Up	
16:00	Meeting close	



## What Local Organisations do we work with?

The MERG West Midlands Area Group have attended model railway exhibitions, organised by the following clubs: -

[Stafford Railway Circle](#)



[Bourneville Model Railway Club](#)

[Warley Model Railway Club](#)

[Cradley Heath Model Railway Club](#)

[Telford Railway Modellers Group](#)



## What is Happening at other MERG Area Groups ?

Here are some of the activities being organised by the nearby East Midlands and Warwickshire & North Oxfordshire area groups.

## East Midlands Area Group

The East Midlands Area Group hosts a very popular call once per month.

Date	Event	Description	Location	Link
------	-------	-------------	----------	------

## Warwickshire and North Oxfordshire Area Group

Our colleagues at Warwick and North Oxford AG are holding face to face meetings every 2 months. If you are interested in attending these groups sign up here and select 'join area group'.



Date	Event	Description	Location	Link
10:00 04-Oct	Warwickshire & North Oxfordshire Area Group Meeting	Note date change from 27th Sept to 4th Oct.	LWMRS Clubroom	

[MERG Home page Area Groups](#)

[More on our Knowledgebase](#)

[Group Members Page](#)

AGS 1

From:  
[https://merg.org.uk/merg\\_wiki/](https://merg.org.uk/merg_wiki/) - Knowledgebase

Permanent link:  
[https://merg.org.uk/merg\\_wiki/doku.php?id=public:westmids&rev=1729499724](https://merg.org.uk/merg_wiki/doku.php?id=public:westmids&rev=1729499724)

Last update: 2024/10/21 09:35

